

# Ultra Check, Inc.

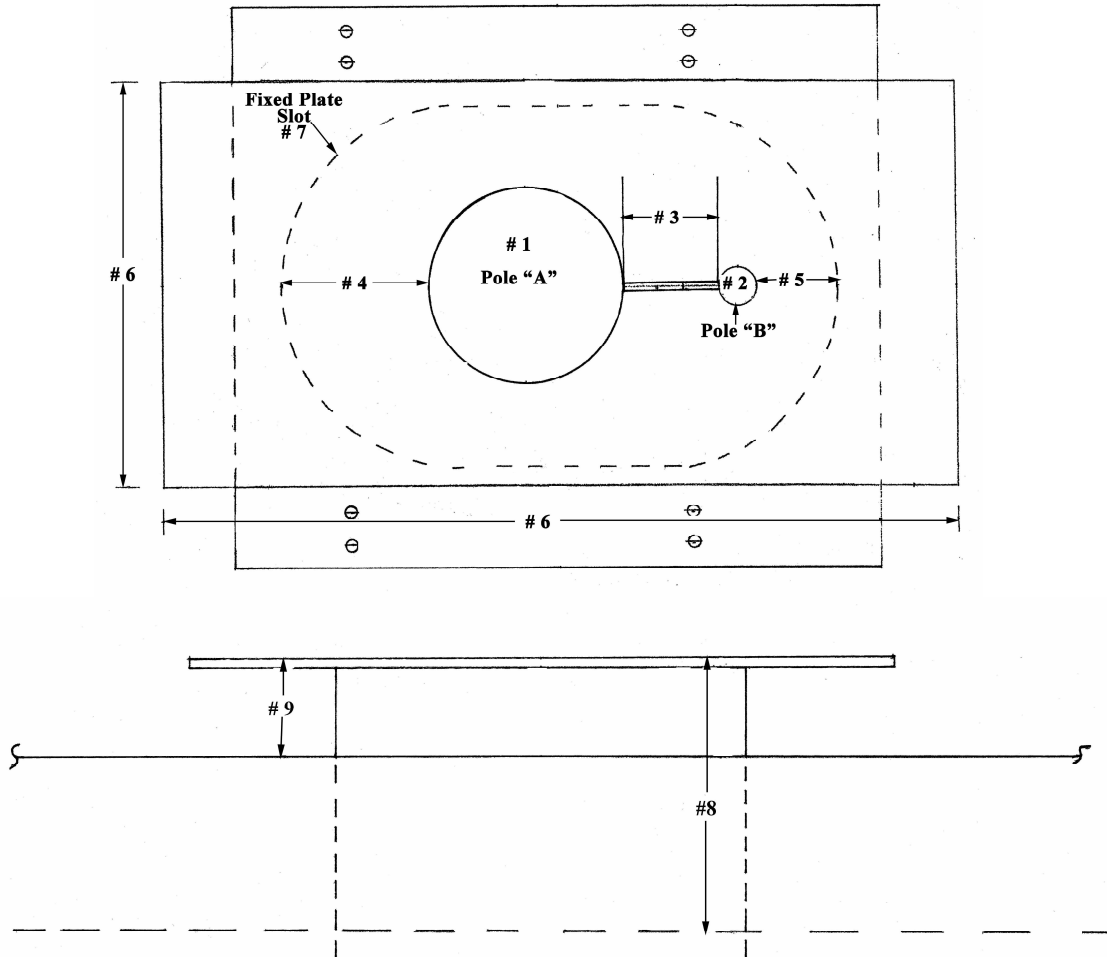
1575-6 Main Street

Atlantic Beach, FL 32233

Ph: (904) 270-2709 : Fax: (904) 270-1183

Email: [ultracheck@aol.com](mailto:ultracheck@aol.com) ; Website: [www.ultracheck.com](http://www.ultracheck.com)

## Thermo-well Installation Considerations for Floating Roof Tanks



If the tank's "as built" drawings are not available, the following dimensions will be required. Please provide these measurements to Ultra Check:

1. Size & Schedule of Gauge/Guide Pole A: \_\_\_\_\_
2. Size & Schedule of Gauge/Guide Pole B: \_\_\_\_\_
3. Distance between pipes A & B: \_\_\_\_\_
4. Distance from slot in fixed plate to Pole "A": \_\_\_\_\_
5. Distance from slot in fixed plate to Pole "B": \_\_\_\_\_
6. Existing Slide Plate: Length: \_\_\_\_\_ Width: \_\_\_\_\_
7. Existing Fixed Plate Slot: Length: \_\_\_\_\_ Width: \_\_\_\_\_
8. Distance from well top to liquid level: \_\_\_\_\_
9. Distance from top of Fixed Plate to Floating Roof Deck: \_\_\_\_\_
10. Tank # (for future reference): \_\_\_\_\_
11. Product contained in Tank: \_\_\_\_\_
12. Type of Roof (aluminum floating – steel): \_\_\_\_\_